



BMS WORLD MISSION **IMPACT REPORT 2024**

Transforming lives:

IMPACT REPORT 2024



Our vision is for a world where all can experience faith in Christ and the abundant life only he provides.

We hope the numbers of impact you see below encourage you to know that, through your support, BMS World Mission is being transformed by God to play our part as the Church across the world continues to grow at a phenomenal rate.

You won't see them represented over the following pages, but two numbers bring us particular joy from our work last year. The first is 777 (there must be everything of God in that!). With 173 added last year, 777 is now the total number of mission workers from

the Global Church whom you have supported over the last four years (our target back in 2020 was 600!).

The second number is 340,000. Based on our calculated assumption that the almost 23,000 new church fellowships planted contain on average 15 people, then in total you helped support over a third of a million new followers of Jesus on their discipleship journey in 2024.

Thank you for your incredible and continued generosity – none of this is possible without you.



Dr Kang-San Tan



Rev Marc Owen

200,137

**people impacted
by BMS projects
in 2024**



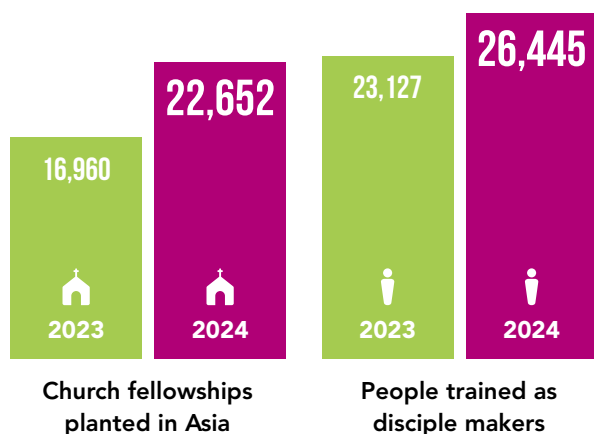


HEART

FOR THE GOSPEL




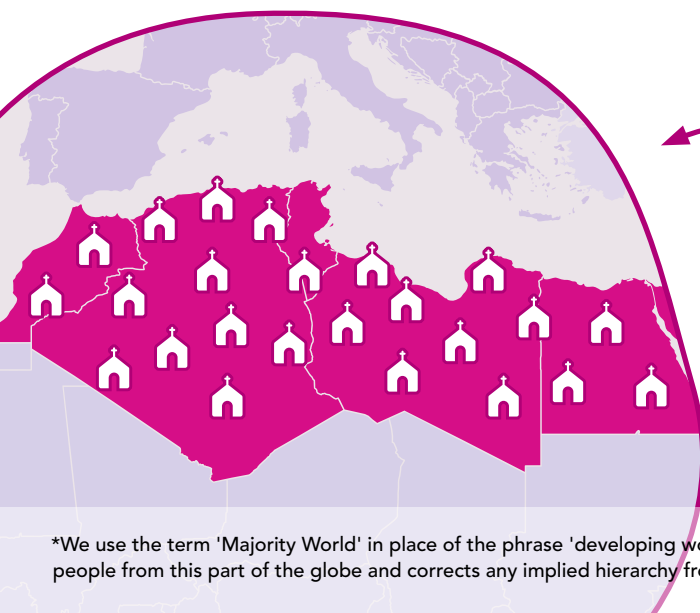
Your support for BMS takes the good news of Jesus to where it's hardly been heard, so that all the world can experience abundant life in Christ. Our partnerships with discipleship makers across Asia and North Africa give us hope that we are growing workers to reap a plentiful harvest.



173

mission workers from the Majority World* supported

 = 10 Workers



50

New church fellowships planted in North Africa

226

Total churches planted from 2020-2024

*We use the term 'Majority World' in place of the phrase 'developing world'. It's a phrase widely accepted by people from this part of the globe and corrects any implied hierarchy from the use of the word 'developing'.



HOPE
FOR THE WORLD



You help tackle the injustices facing those living on the margins, where those who bear the least responsibility suffer the most. Throughout 2024, we worked to dramatically increase our partnerships with local churches, who are best placed to bring long-term community transformation.

77,854 **10,709**

People receiving life-saving help in the poorest countries

Members attending churches involved in BMS-supported community projects

154

2023

619

2024

People trained to mobilise churches to serve communities



HELP
FOR THE JOURNEY

You walk with those forced to leave home, in a time where more people than ever before are displaced – whether within their own countries or having crossed borders. This unprecedented displacement is a sign of the world's fragility. It has led to BMS expanding its focus on supporting people spiritually and physically when their enforced journeys come to an end.

13,739

Refugees receiving support on the move
(2023: 13,107)

12,070

Number of refugees supported at journey's end
(2023: 692)

211

Number of partner workers supported by BMS through networks whose work focuses on refugees

DISASTER RECOVERY

When disaster strikes, you respond. In fact, you stepped in 26 times in 2024, including when Cyclone Remal hit Bangladesh and when Nepal was struck by catastrophic flooding. You directly support people on the ground who understand the situation. You help us look forward, which is why BMS gives even more grants to long-term recovery than immediate relief.

49,485

People helped after disaster struck
(2023: 18,077)

Countries where BMS responded:

-   **Nepal** (floods)
-   **Bangladesh** (cyclone)
-   **D R Congo** (conflict)
-   **Lebanon** (conflict)
-   **Ukraine** (conflict)
-   **Afghanistan** (floods)
-   **Chad** (floods)

EXPENDITURE



*Historic partners represents work that is being phased out over a period of four years since the introduction of the new BMS strategy in 2021. Historic partners have continued to achieve impact in our previous strategic areas



Share
abundant
life, for
generations.

Leave a gift in
your **Will** today.

Call: 01235 517615

Email: legacies@bmsworldmission.org

